

LAKESIDE

NEW SOUTH WALES



Lakeside: 36 Lakeside Drive, South Durras, NSW 2536

Lakeside is a recently refurbished home with a relaxing outlook adjacent to a public reserve. South Durras is located only 15 minutes from Batemans Bay town centre and all conveniences. This immaculately presented home is positioned directly across from Durras Lake and just a few minutes walk to the boat ramp and Durras beach. Relax on the large front deck with shade sail overlooking the fully fenced yard.

South Durras is one of the South Coast's most popular holiday destinations where you can swim, kayak, fish, surf and enjoy the native wildlife. With its rich forests, private beaches and imposing headlands, South Durras is picture postcard country. Durras Lake is regarded as one of the purest estuaries on the east coast due to its protection by the surrounding the untouched forest catchment and is the perfect place to immerse yourself in nature.

Make time to explore the close by the Murramarang National Park and embark on one of the many interesting walking trails or explore the sheltered lake and beaches where the only footprints on the sand may be your own.

*Immerse yourself
in nature amid the
pristine Durras Lake
and the ocean*

The OTIS Foundation

PO Box 1191, Bendigo Central
Victoria, 3552

Phone: (03) 5444 1184

email: bookings@otisfoundation.org.au
otisfoundation.org.au

Providing sanctuaries to nurture those facing the challenges of living with breast cancer

THE **OTIS** FOUNDATION
BREAST CANCER RETREATS



LAKE SIDE

NEW SOUTH WALES

Retreat details

Location and area

South Durras is located on the South Coast of NSW and forms the gateway to the Murrumbidgee National Park. It lies a three and a half hour drive (275km) from Sydney and a two hour drive (162km) from Canberra.

The beach at South Durras features tidal rock pools with wildlife such as kangaroos often grazing close to the beach. Birdlife is plentiful in the area, within the National Park you can join a tour with the local birdwatchers who regularly explore the park or take a self-guided tour and try to identify the myriad of birds with the aid of a local bird identification guide or book.

Lakeside is located on a private street, opposite bushland bordering Durras Lake. It is a short drive to a local general store with major supermarket chains and other amenities located in Batemans Bay approximately 15min drive away.

Accommodation

Lakeside can accommodate two guests. The living area is light and airy with ample natural light and the fully equipped kitchen is renovated and offers gas cooking. The bedroom contains a queen sized bed and the spacious bathroom is home to the washing machine. The living/dining area has a split system for heating and cooling and overlooks the large deck and expanse of lawn.

Availability

Lakeside is available between February and December for four nights Monday – Friday. The property is not available public holidays, weekends and school holidays.

Pets/smoking

Pets are not permitted and the property is strictly smoke free.

Heating/Cooling

Lakeside offers split system heating and cooling in the living/dining area.

Key access

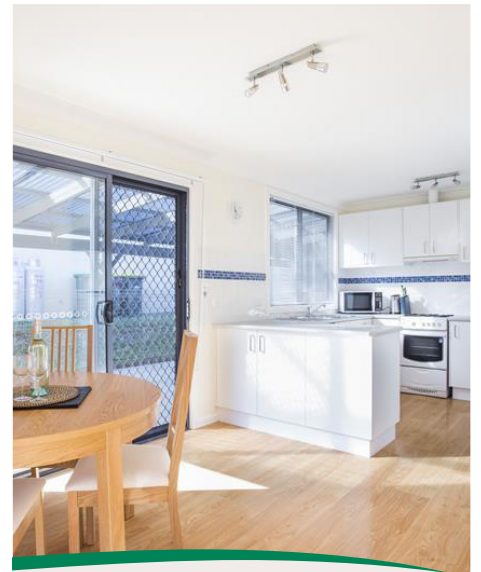
The keys are available for collection from a key box located at the property. The OTIS Foundation will contact you two weeks prior to your stay, to provide the location and access information.

Other considerations

Guests are required to bring their own food, personal items and beach towels. It has a fully equipped kitchen and a BBQ is available for guest use.

Stay limit

One stay only.



The OTIS Foundation

PO Box 1191, Bendigo Central
Victoria, 3552

Phone: (03) 5444 1184

email: bookings@otisfoundation.org.au
otisfoundation.org.au

Providing sanctuaries to nurture those facing the challenges of living with breast cancer

THE **OTIS**
FOUNDATION
BREAST CANCER RETREATS

